



# LIFE 30-24

Rechargeable Lithium Iron Phosphate Battery



## PRODUCT FEATURES



• **Super Safe** Lithium Iron Phosphate Chemistry.



• **High Performance and Durability:** Offers significantly longer cycle life compared to traditional lead-acid batteries, ensuring reliable performance in a wide temperature range from -20°C to 60°C.



• **Compact and Lightweight:** High energy density in a small, lightweight design, ideal for space and weight-sensitive applications.



• **Long Lifespan:** Delivers extended stable, maintenance-free performance



• **Unique Built-In BMS:** Monitors and controls battery parameters, protecting against over-charging, over-discharging, over-current, and short circuits.

## FUNCTIONAL SPECIFICATIONS

Cell Chemistry :	LiFePO <sub>4</sub>
Cell Type :	Cylindrical
Nominal Voltage :	25.6V
Nominal Capacity :	30Ah
Stored Energy :	768Wh
Internal Resistance :	≤30 mΩ
Self Discharge per Month :	<3%
Cycle life @ 80% DoD :	≥3000 Cycles*
Series Connection :	Single Use
Parallel Connection :	Single Use
Combination Mode :	8S1P(3.2V, 30Ah)
Communication Interface :	.NA

## MECHANICAL SPECIFICATIONS

Dimensions (L *W * H) :	229*138*213 mm
Weight :	7.3±0.3Kg
Terminal Type :	M6/M8
Case Material :	ABS
Ingress Protection Marking :	IP54

## CHARGE SPECIFICATIONS

Recommended Charge Voltage :	≤29.2V
Recommended Charge Current :	≤15A(0.5C)**
Max. Charge Current :	≤ 30A
Over Voltage Protection :	30.4±0.2V
Reconnect Voltage :	28V
Primary Charge Current Protection :	30~45A/15s

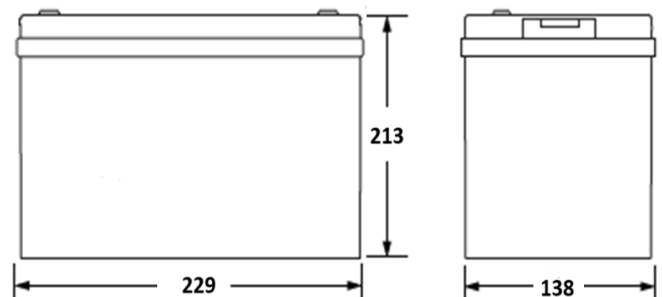
## DISCHARGE SPECIFICATIONS

Recommend Discharge Current :	≤ 15A(0.5C)**
Max. Discharge Current :	≤ 30A/70A-10s
Max. Discharge Voltage :	≥21.6V
Low Voltage Protection :	18.4±0.2V
Reconnect Voltage :	24V
Primary Discharging Current Protection :	30~70A/15s

## ENVIRONMENTAL SPECIFICATIONS

Charge Temperature :	10~45°C
Discharge Temperature :	-20~55°C
Storage Temperature :	20~30°C
Optimal Operation Humidity :	5~95%RH/Non-Condense

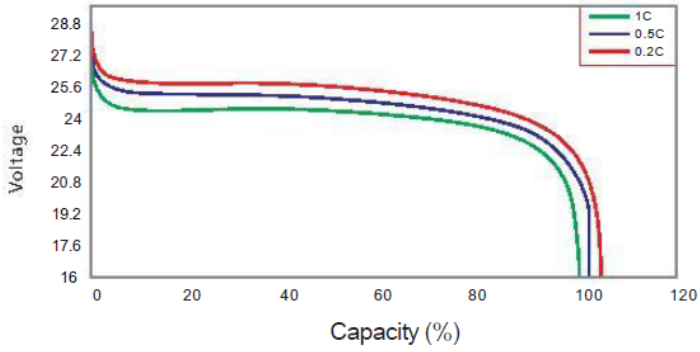
## OUTLINE DIMENSION



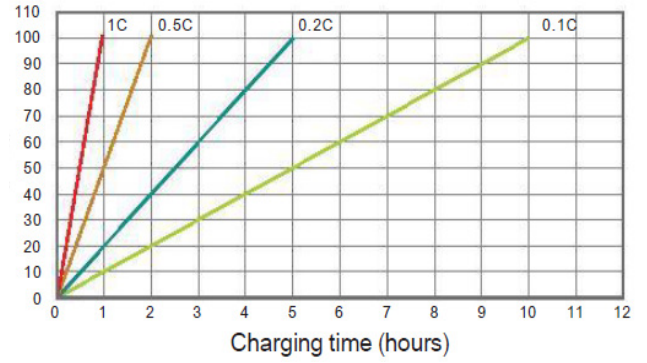
\*Refer to warranty terms for cycle life performance conditions

\*\* C=Capacity

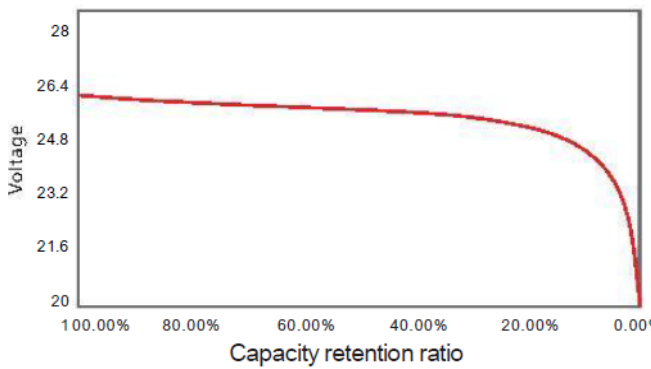
## Discharge Performance



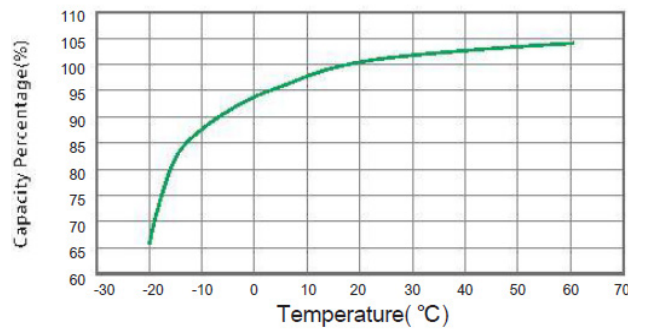
## Battery Capacity vs Charging Time



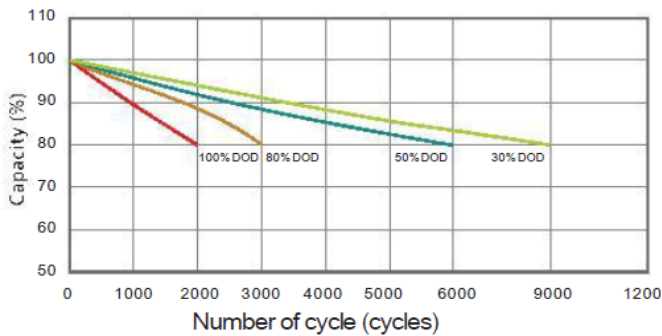
## State of Charge vs OCV



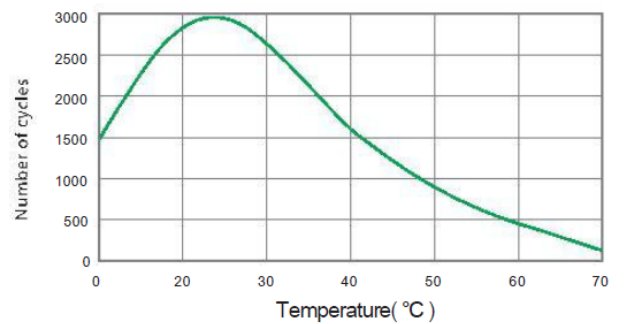
## Temperature Effect on Capacity



## Cycle life in relation to Depth of Discharge (0.5C)



## Cycle Life vs Temperature



## APPLICATIONS



- Telecom and Data Centers
- Energy Storage Systems
- Uninterruptible Power Supply (UPS)
- Remote Power Supply
- Industrial Applications

## CERTIFICATIONS

- UN38.3

## SHIPPING CLASSIFICATION

- UN 3480
- Class 9